

### Features

- 9V to 100V input voltage range
- 1.5A current limit
- 1A continuous load current
- 95% Peak Efficiency
- 400 $\mu$ A operating quiescent current
- 120V 400-m $\Omega$  high-side MOSFET
- Peak Current mode control
- 150 kHz Fixed Frequency
- Internal compensation for ease of use
- Up to 92% duty cycle
- 0.8V voltage reference
- 1 $\mu$ A shutdown current
- 150ms Hiccup mode short circuit protection

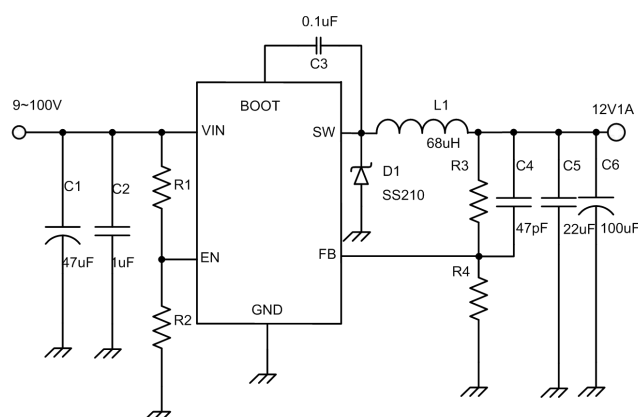
### Function

- Thermal shutdown Function
- ESOP-8 package

### Applications

- Charger in vehicle
- Battery Chargers
- Power adapter

### Typical Application



### Description

The ASP8A10W is a high voltage, non-synchronous step-down converter operates over a wide range input voltage 9V to 100V. The ASP8A10W integrates a 120V 400m $\Omega$  high-side MOSFET.

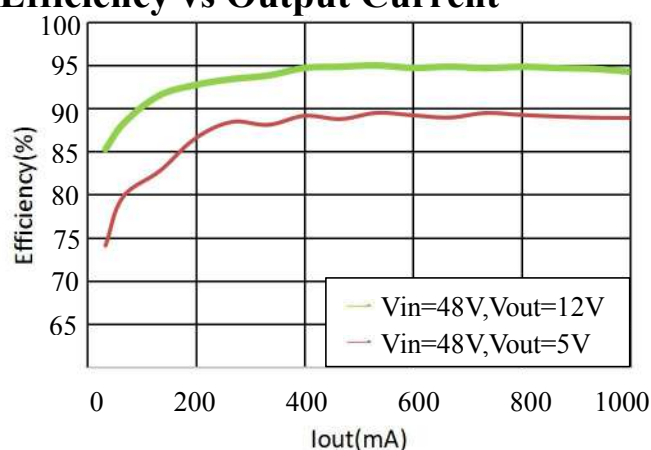
The ASP8A10W delivers 1A continuous load current with up to 95% efficiency. The ASP8A10W operates with fixed frequency peak current control with built-in compensation eliminates the need for external components.

Cycle-by-cycle current limit in high-side MOSFET protects the converter in an overload condition. Hiccup mode protection is triggered if the over-current condition has persisted for longer than the present time.

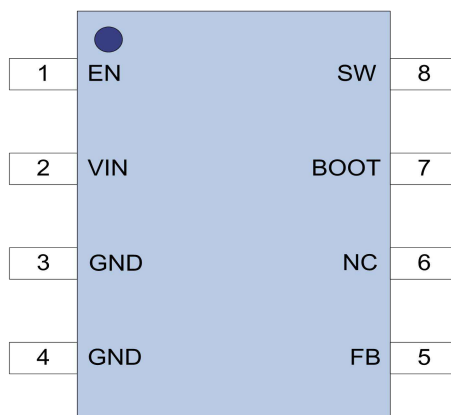
The ASP8A10W exhibits protection features that protect the load from faults like under-voltage, over-current and over-temperature.

The ASP8A10W is available in an ESOP-8 package.

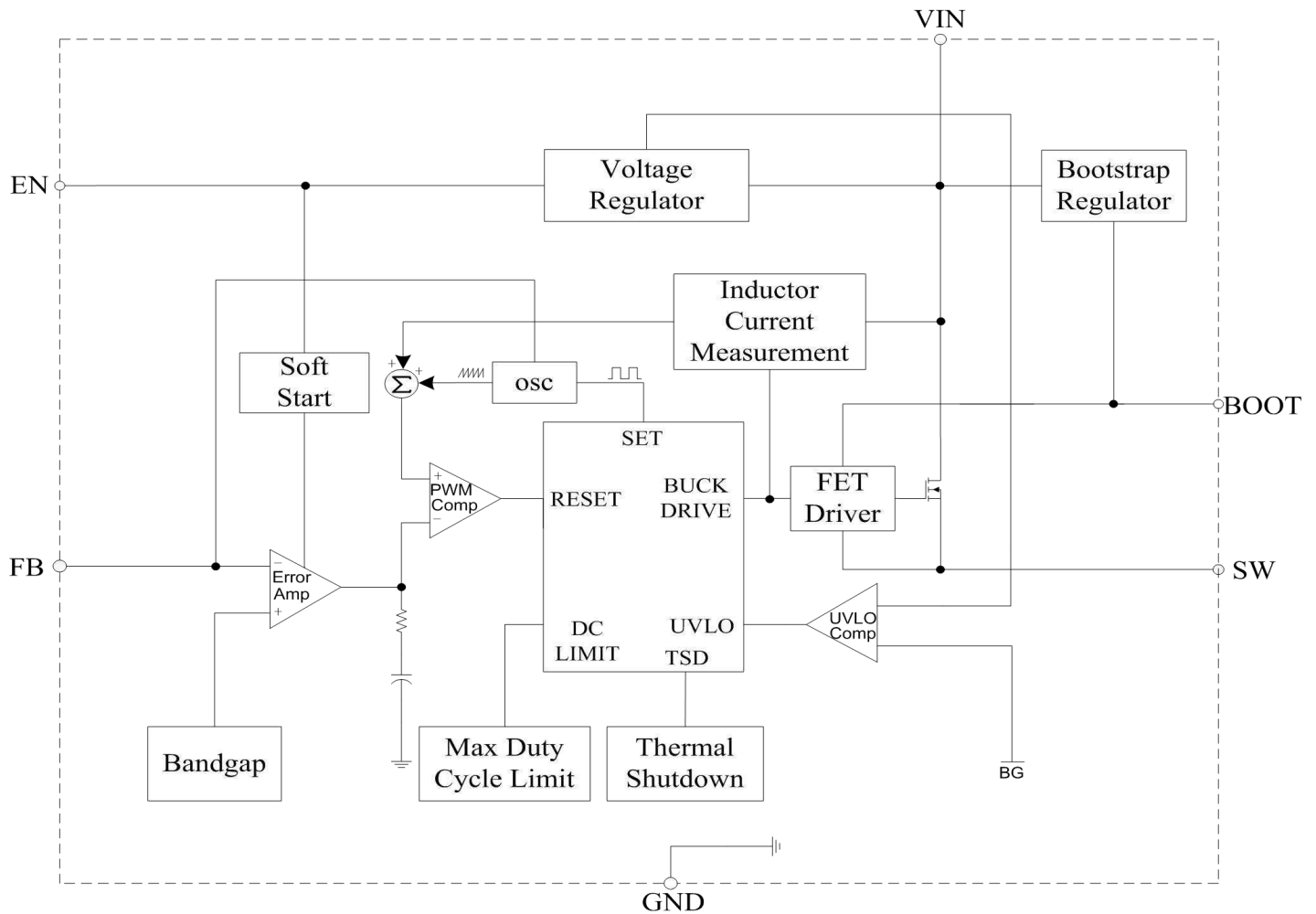
### Efficiency vs Output Current



### Pin Configuration



PIN	NAME	Description
1	EN	<b>Enable input.</b> Pull EN below the specified threshold to shut down the ASP8A10W. Pull EN above the specified threshold to enable the ASP8A10W.
2	VIN	<b>Input supply.</b> VIN supplies power to all of the internal control circuitry, both BOOT regulators, and the high-side switch.
3 , 4	GND	<b>Ground.</b> GND should be placed as close to the output capacitor as possible to avoid the high-current switch paths. Connect the exposed pad to GND plane for optimal thermal performance.
5	FB	<b>Feedback.</b> FB is the input to the voltage hysteretic comparator. The average FB voltage is maintained at 800mV by loop regulation.
6	NC	No Connection
7	BOOT	<b>Bootstrap.</b> BOOT is the positive power supply for the internal, floating, high-side MOSFET driver. Connect a bypass capacitor between BOOT and SW.
8	SW	<b>Switch node.</b> SW is the output from the high-side switch. A low forward voltage schottky rectifier to ground is required. The rectifier must be placed close to SW to reduce switching spikes.

**100V Input, 1A Output, Non-synchronous Step-down Converter**
**Block Diagram**

**Absolute Maximum Ratings**

Item	Description	Range	Unit
$V_{SW}$ , $V_{EN}$ , $V_{IN}$	SW , EN , VIN Voltage	-0.3 ~ +120	V
$V_{FB}$	FB Voltage	-0.3 ~ +7	V
$V_{BOOT}$	BOOT Voltage	$V_{SW}-0.3 \sim V_{SW}+7$	V
$T_{stg}$	Storage Junction Temperature	-55 ~ 150	°C
$T_{solder}$	Lead Temperature (Soldering 10 sec.)	260°C	
ESD	Human Body Model	2	kV

**Note:** exceeding the range specified by the rated parameters will cause damage to the chip, and the working state of the chip beyond the range of rated parameters cannot be guaranteed. Exposure outside the rated parameter range will affect the reliability of the chip.

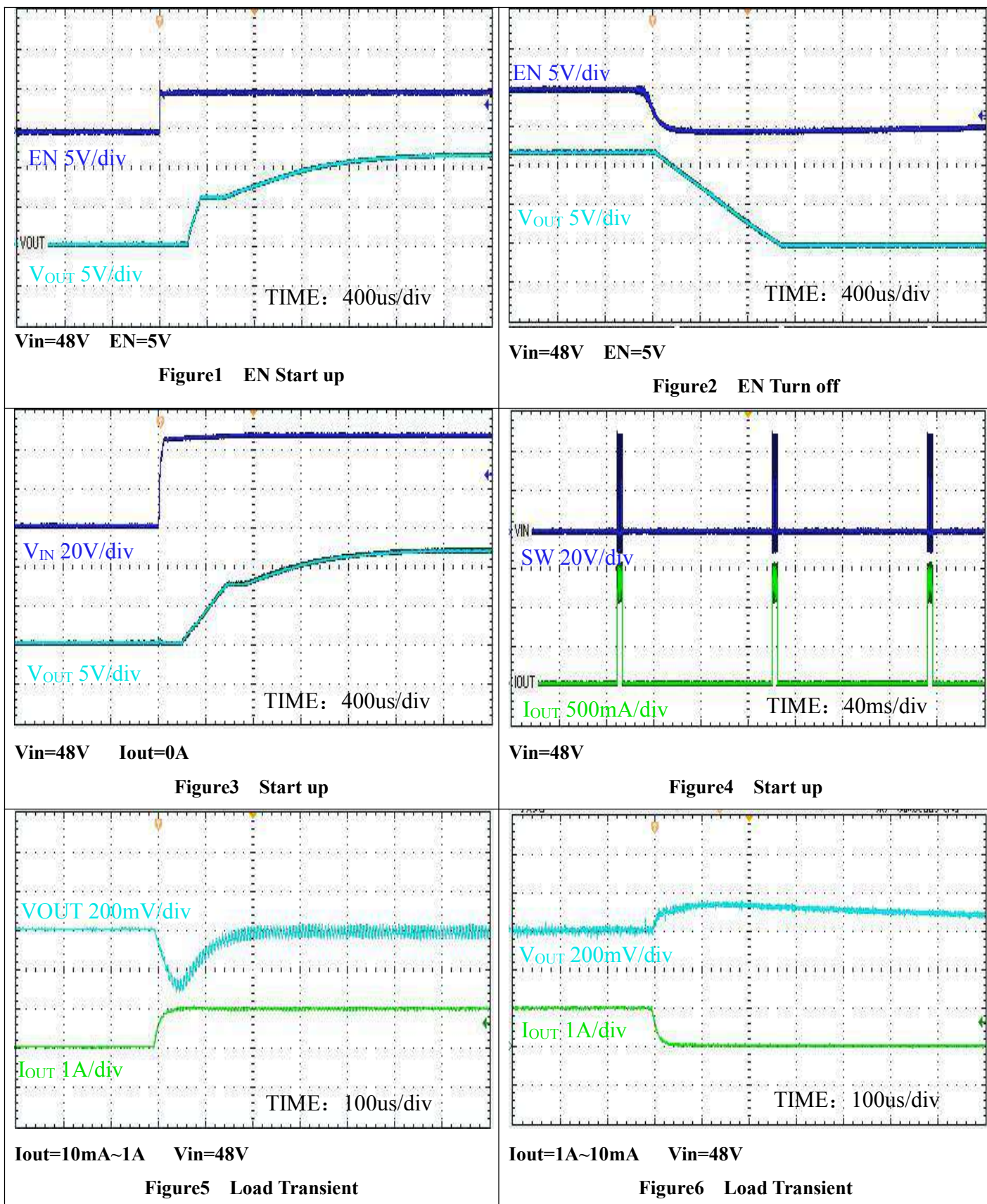
## Electrical Characteristics

(At  $T_A=25^{\circ}\text{C}$ ,  $V_{IN}=48\text{V}$ ,  $V_{OUT}=12\text{V}$ , Unless Otherwise Noted)

Parameter	Symbol	Test Conditions	Min	Typ	Max	Unit
<b>VCC SUPPLY VOLTAGE</b>						
Input Voltage	$V_{IN}$		9	-	100	V
UVLO	$V_{STRAT}$		-	8	-	V
UVLO Hysteresis	$V_{UVLO1}$		-	0.3	-	V
Shutdown supply current	$I_{SHUT}$	$EN=0\text{V}$	-	9	-	$\mu\text{A}$
Input Quiescent Current	$I_Q$	$V_{FB}=1\text{V}$	-	500	-	$\mu\text{A}$
<b>ENABLE</b>						
Enable threshold voltage	$V_{EN}$		-	2.2	-	V
Enable threshold voltage Hysteresis	$V_{UVLO2}$		-	0.2	-	V
<b>FEEDBACK</b>						
FB Reference Threshold	$V_{FB}$		-	0.8	-	V
Feedback short voltage	$V_{FB (short)}$		-	0.35	-	V
Feedback short voltage Hysteresis	$V_{FB2}$		-	0.42	-	V
<b>OSCILLATOR</b>						
Switching frequency	F	$I_{OUT}=500\text{mA}$	-	150	-	kHz
Maximum Duty Cycle	$D_{MAX}$	$V_{IN}=12\text{V}$	-	92	-	%
<b>CURRENT LIMIT</b>						
Current Limit Threshold	$I_{PEAK}$		-	1.5	-	A
<b>HIGH-SIDE MOSFET</b>						
On-resistance	$R_{DS(on)}$	$V_{IN}=18\text{V}$	-	400	-	$\text{m}\Omega$
<b>THERMAL SHUTDOWN</b>						
Thermal shutdown Temp	$T_{SD}$		-	150	-	$^{\circ}\text{C}$
Thermal shutdown Temp Hysteresis	$T_{SH}$		-	30	-	$^{\circ}\text{C}$

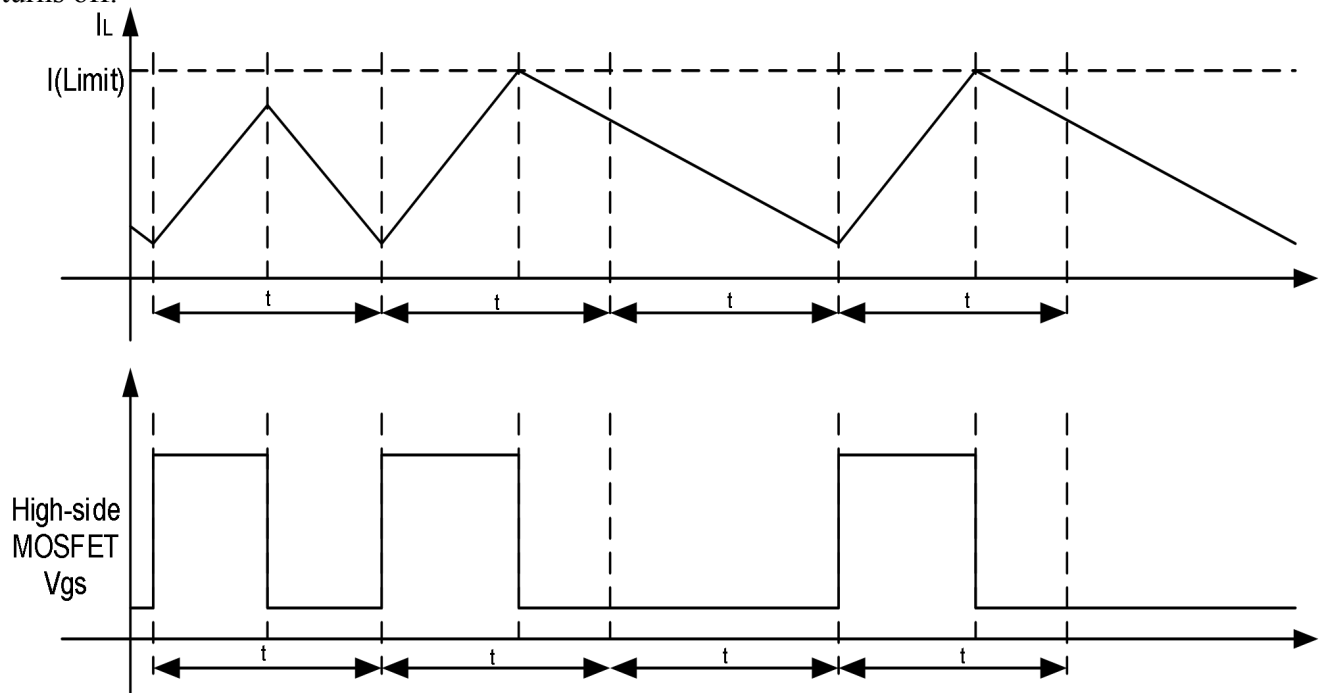
## 100V Input, 1A Output, Non-synchronous Step-down Converter

**Typical Characteristics** (At  $T_A=25^{\circ}\text{C}$ ,  $V_{IN}=48\text{V}$ ,  $V_{OUT}=12\text{V}$ , Unless Otherwise Noted)

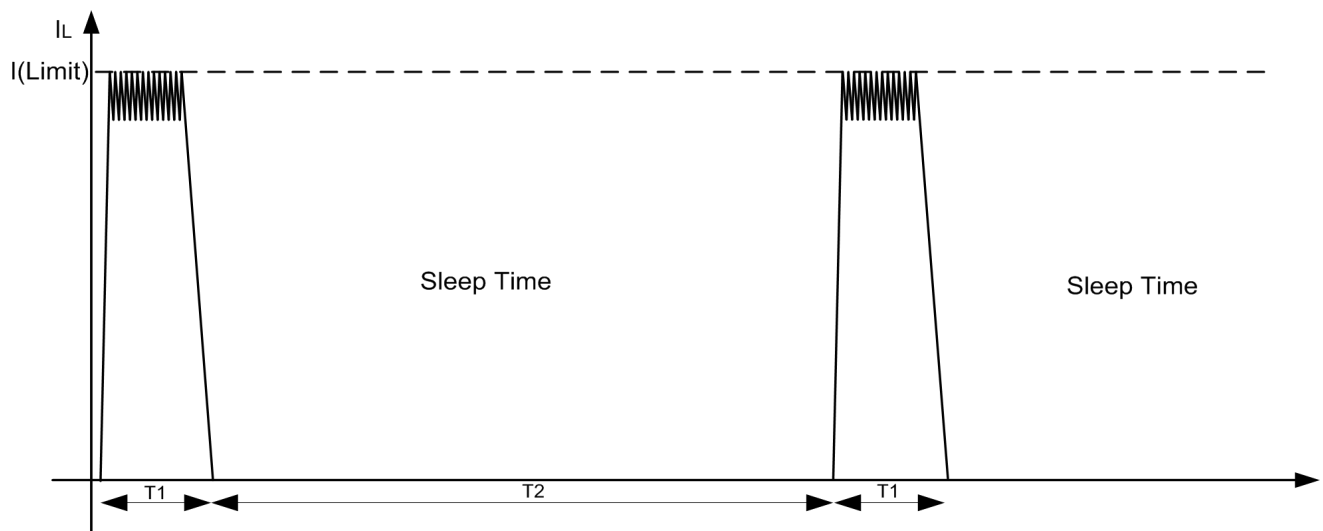


## Applications Information

**Over-current Protection:** The ASP8A10W implements current-mode control which uses the internal COMP voltage to control the turn on and the turnoff of the high-side MOSFET on a cycle-by-cycle basis. During each cycle, the switch current and the current reference generated by the internal COMP voltage are compared. When the peak switch current intersects the current reference the high-side switch turns off.



**Hiccup mode:** If an output overload condition occurs for more than the hiccup wait time, which is programmed for 512 switching cycles ( $T_1$ ), the device shuts down and restarts after the hiccup time of 16384 cycles ( $T_2$ ). The hiccup mode helps to reduce the device power dissipation under severe over-current conditions.





100V Input, 1A Output, Non-synchronous Step-down Converter

**C1:** This capacitor's purpose is to supply most of the switch current during the on-time, and limit the voltage ripple at VIN. To allow for the capacitor's tolerance, temperature effects, and voltage effects, a 47  $\mu$ F, capacitor is used.

**C2:** This capacitor helps avoid supply voltage transients and ringing due to long lead inductance at VIN. A low ESR, 1  $\mu$ F ceramic chip capacitor is recommended, located close to the ASP8A10W.

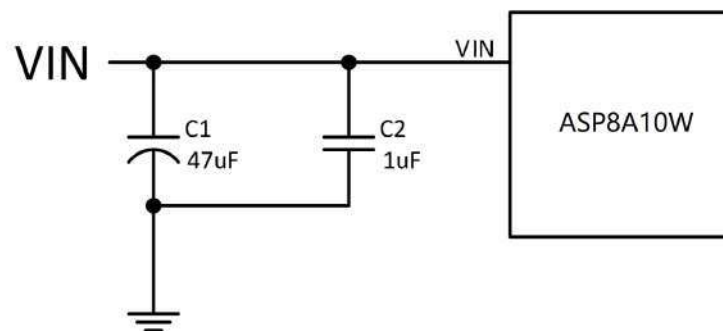


Figure7 The capacitor on the VIN

**L1:** The inductance is determined based on the switching frequency, load current, inductor ripple current, and the minimum and maximum input voltages designated VIN(min) and VIN(max), respectively. The peak inductor current during an overload condition is limited to 3 A nominal. Use the value of 68  $\mu$ H, 5A to prevent saturation.

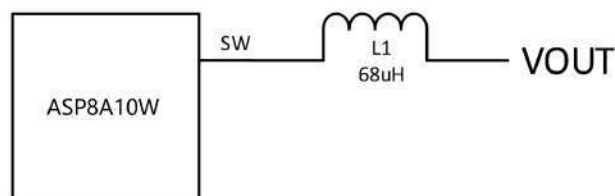


Figure8 The inductor on the choice

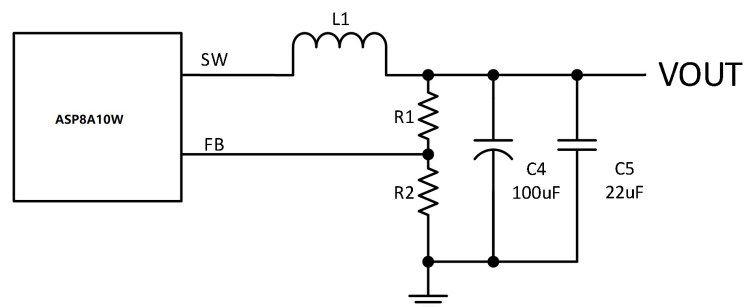
## 100V Input, 1A Output, Non-synchronous Step-down Converter

**D1:** A power Schottky diode is recommended. Ultra-fast recovery diodes are not recommended as the high speed transitions at the SW pin may inadvertently affect the IC's operation through external or internal EMI. The important parameters are reverse recovery time and forward voltage. The reverse recovery time determines how long the reverse current surge lasts with each turn-on of the internal buck switch. The forward voltage drop affects efficiency. The diode's reverse voltage rating must be at least as great as the maximum input voltage, plus ripple and transients, and its current rating must be at least as great as the maximum current limit specification.

**C4/C5:** The output capacitor filters the inductor ripple current and provides a source of charge for transient load conditions. The best performance is typically obtained using ceramic or polymer electrolytic type components. Typical tradeoffs are that the ceramic capacitor provides extremely low ESR to reduce the output ripple voltage and noise spikes. In order to meet output ripple specification, we should choose a ceramic capacitor of 22uF and a polymer electrolytic capacitor of 100uF.

**R1/R2:** The output voltage (VOUT) is programmed by two external resistors as shown in the Figure15. The regulation point can be calculated as follows:

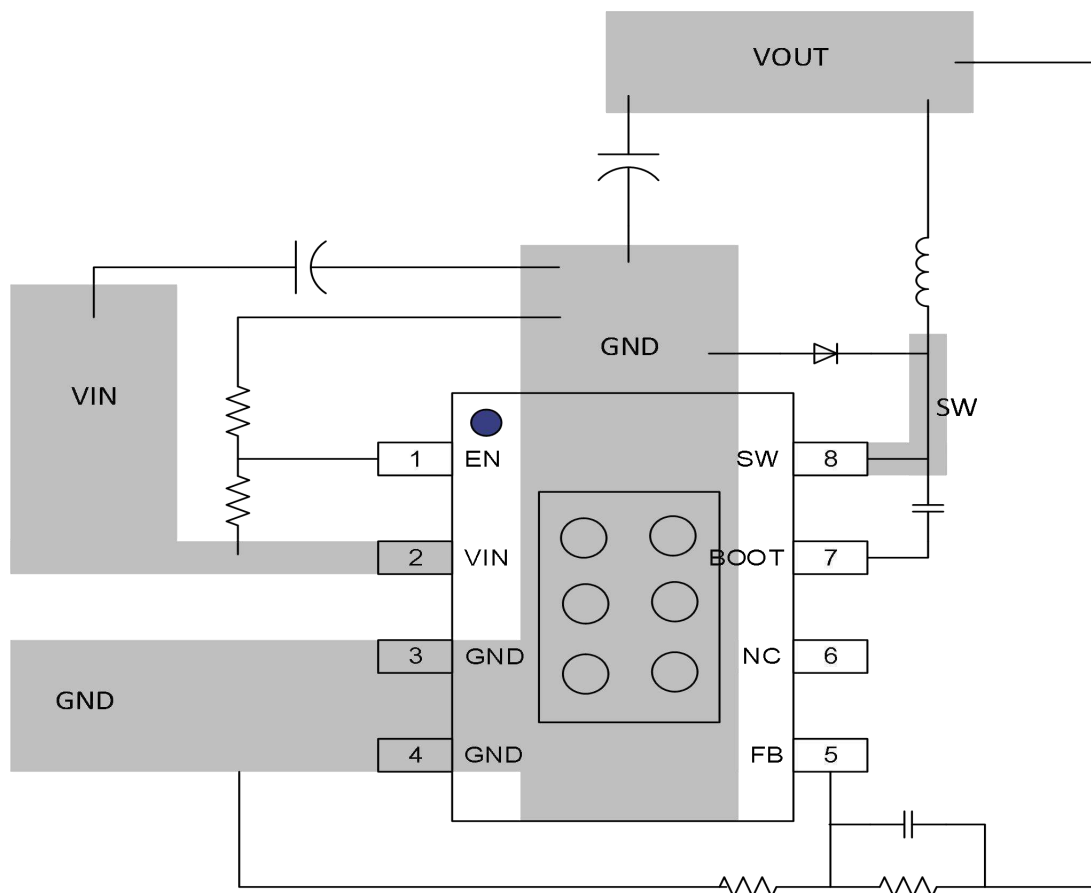
$$V_{OUT} = 0.8 \times (R1 + R2) / R2$$



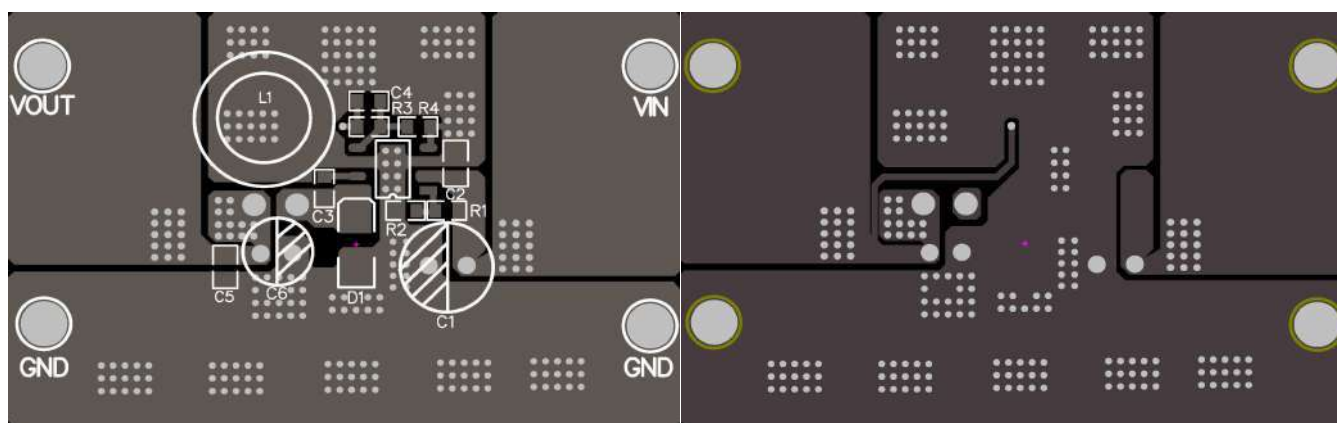
**Figure9 Output Capacitors and Output Configuration**



## Layout



## PCB LAYOUT



**Top Layer**

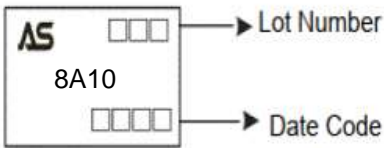
**Bottom Layer**

### Ordering and Marking Information

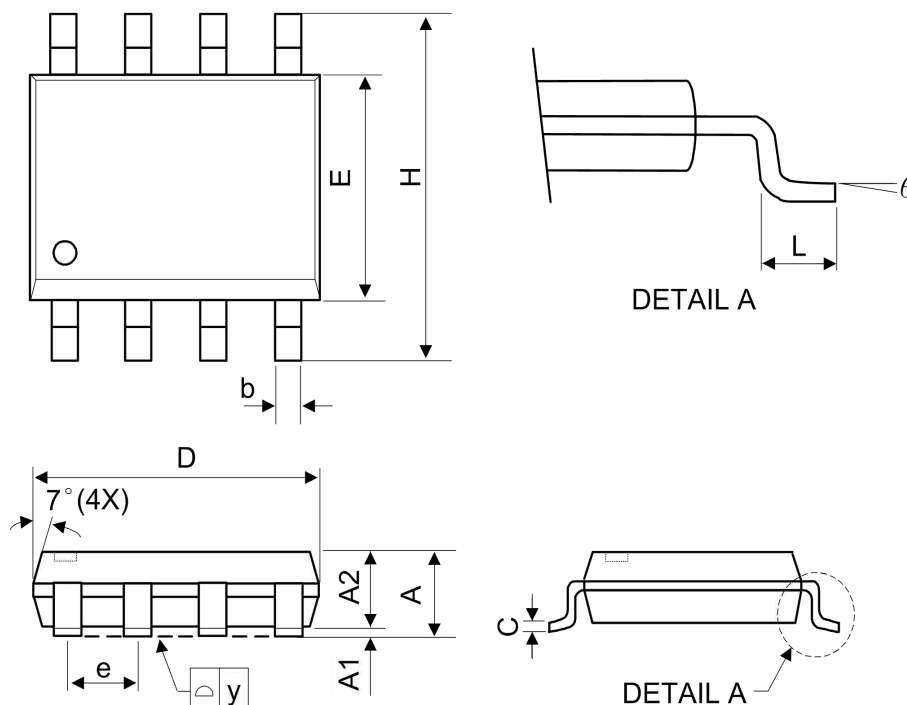
Ordering Device No.	Marking	Package	Packing	Quantity
ASP8A10W-R	8A10	ESOP-8	Tape&Reel	4000/Reel

Note: "W" stands for package. "W": ESOP-8.

Note: "R" stands for Packing, Tape&Reel.

PACKAGE	MARKING
ESOP-8	

## Package Outline



Symbol	Millimetre			Inch		
	Min	Typ	Max	Min	Typ	Max
A	-	-	1.75	-	-	0.069
A1	0.1	-	0.25	0.04	-	0.1
A2	1.25	-	-	0.049	-	-
C	0.1	0.2	0.25	0.0075	0.008	0.01
D	4.7	4.9	5.1	0.185	0.193	0.2
E	3.7	3.9	4.1	0.146	0.154	0.161
H	5.8	6	6.2	0.228	0.236	0.244
L	0.4	-	1.27	0.015	-	0.05
b	0.31	0.41	0.51	0.012	0.016	0.02
e	1.27 BSC			0.050 BSC		
y	-	-	0.1	-	-	0.004
θ	0°	-	8°	0°	-	8°

**100V Input, 1A Output, Non-synchronous Step-down Converter****IMPORTANT NOTICE**

ShenZhen Ascend Semiconductor incorporated MAKES NO WARRANTY OF ANY KIND, EXPRESS OR IMPLIED, WITH REGARDS TO THIS

DOCUMENT, INCLUDING, BUT NOT LIMITED TO, THE IMPLIED WARRANTIES OF MERCHANTABILITY AND FITNESS FOR A PARTICULAR PURPOSE (AND THEIR EQUIVALENTS UNDER THE LAWS OF ANY JURISDICTION).

ShenZhen Ascend Semiconductor Incorporated and its subsidiaries reserve the right to make modifications, enhancements, improvements, corrections or other changes without further notice to this document and any product described herein. ShenZhen Ascend Semiconductor Incorporated does not assume any liability arising out of the application or use of this document or any product described herein; neither does ShenZhen Ascend Semiconductor Incorporated convey any license under its patent or trademark rights, nor the rights of others. Any Customer or user of this document or products described herein in such applications shall assume .

all risks of such use and will agree to hold Ascendsemi Incorporated and all the companies whose products are represented on ShenZhen Ascend Semiconductor Incorporated website, harmless against all damages.

ShenZhen Ascend Semiconductor Incorporated does not warrant or accept any liability whatsoever in respect of any products purchased through unauthorized sales channel. Should Customers purchase or use ShenZhen Ascend Semiconductor Incorporated products for any unintended or unauthorized application, Customers shall indemnify and hold ShenZhen Ascend Semiconductor Incorporated and its representatives harmless against all claims, damages, expenses, and attorney fees arising out of, directly or indirectly, any claim of personal injury or death associated with such unintended or unauthorized application.

**[www.ascendsemi.com](http://www.ascendsemi.com)**