

Features

- Low voltage drop:
0.12V@100mA@VOUT=3.3V(Typ.)
- Standby Mode: 0.1uA
- Low temperature coefficient
- High input voltage (up to 8V)
- Output voltage accuracy: tolerance $\pm 2\%$
- SOT23-5、SOT89 package

Applications

- Battery-powered equipment
- Communication equipment
- Mobile phones
- Portable games
- Cameras, Video cameras
- Reference voltage sources

General Description

The ASPL8210 series are highly accurate, low noise, CMOS LDO Voltage Regulators. Offering low output noise, high ripple rejection ratio, low dropout and very fast turn-on times, the ASPL8210 series is ideal for today's cutting edge mobile phone. Internally the ASPL8210 includes a reference voltage source, error amplifiers, driver transistors, current limiters and phase compensators.

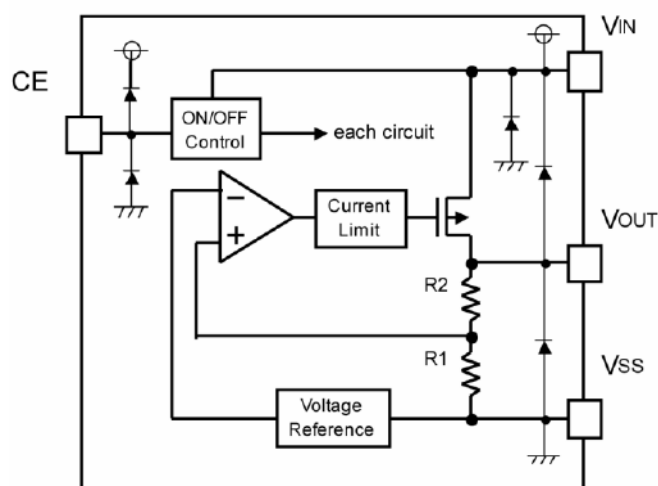
The output voltage is set by current trimming. Voltages are selectable in 100mV steps within a range of 1.2V to 3.3V.

When the CE input pin is low, the fast discharge channel can pass, a built-in pull-down resistor

pulls the output voltage low. Fast discharge function optional.

The ASPL8210 series is also fully compatible with low ESR ceramic capacitors, reducing cost and improving output stability. This high level of output stability is maintained even during frequent load fluctuations, due to the excellent transient response performance and high PSRR achieved across a broad range of frequencies. The CE function allows the output of regulator to be turned off, resulting in greatly reduced power consumption.

Block Diagram



Package and Pin assignment

SOT23-5 (Top View)

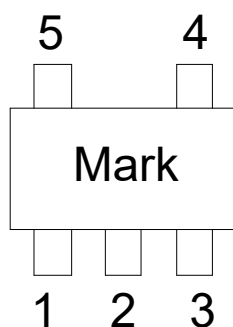


Table1: ASPL8210 series (SOT23-5 PKG)

| PIN NUMBER | SYMBOL | FUNCTION |
|------------|-----------|-----------------|
| 1 | V_{IN} | Power Input Pin |
| 2 | GND | Ground |
| 3 | CE | Chip Enable Pin |
| 4 | NC | No Connection |
| 5 | V_{OUT} | Output Pin |

SOT89 (Top View)

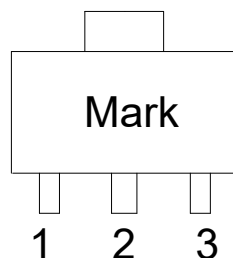


Table2: ASPL8210 series (SOT89 PKG)

| PIN NUMBER | SYMBOL | FUNCTION |
|------------|-----------|-----------------|
| 1 | GND | Ground |
| 2 | V_{IN} | Power Input Pin |
| 3 | V_{OUT} | Output Pin |

Absolute Maximum Ratings

Supply Voltage-0.3V to 8V

Storage Temperature-50°C to 125°C

Operating Temperature-40°C to 85°C

Note: These are stress ratings only. Stresses exceeding the range specified under “Absolute Maximum Ratings” may cause substantial damage to the device. Functional operation of this device at other conditions beyond those listed in the specification is not implied and prolonged exposure to extreme conditions may affect device reliability.

Thermal Information

| Symbol | Parameter | Package | Max. | Unit |
|---------------|--|---------|------|------|
| θ_{JA} | Thermal Resistance (Junction to Ambient) (Assume no ambient airflow, no heat sink) | SOT23-5 | 500 | °C/W |
| | | SOT89 | 200 | |
| P_D | Power Dissipation | SOT23-5 | 0.25 | W |
| | | SOT89 | 0.5 | |

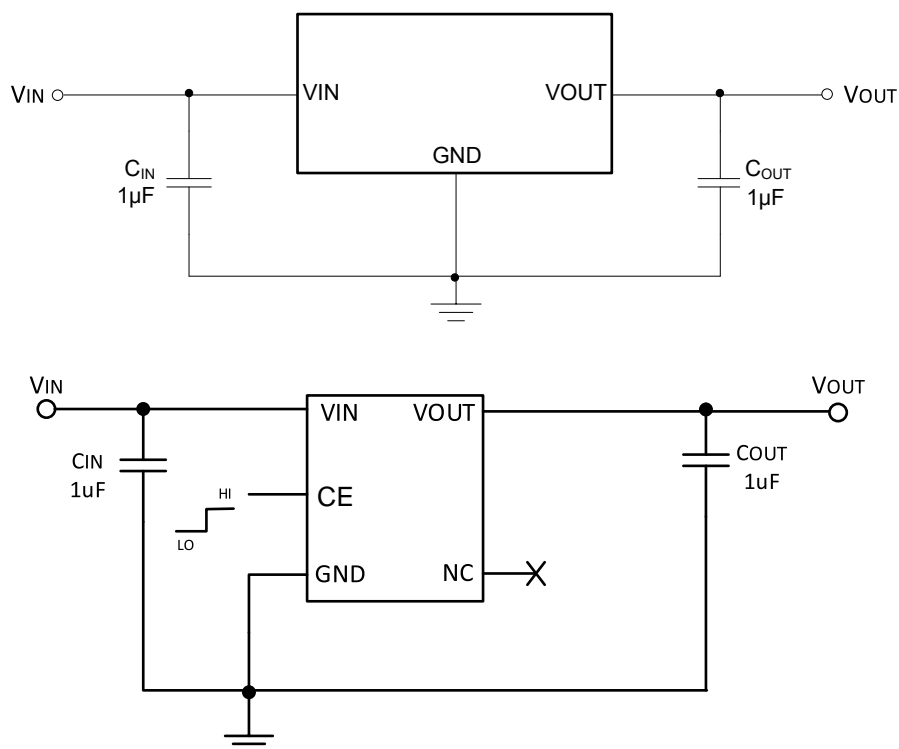
Note: P_D is measured at $T_a = 25^\circ\text{C}$

Electrical Characteristics

ASPL8210 series (Ta=25°C)

| Parameter | Symbol | Conditions | Min. | Typ. | Max. | Unit |
|---|---|--------------------------------|-----------|------|-----------|--------|
| Output Voltage | Vout | Vin=Vout+1V 1.0mA≤Iout≤30mA | Vout×0.98 | -- | Vout×1.02 | V |
| Output Current*1 | Iout | Vin-Vout=1V | -- | 500 | -- | mA |
| Line Regulation | $\Delta V_{out1}/(\Delta V_{in} \cdot V_{out})$ | 4.3V≤Vin≤8V Iout=10mA | -- | 0.05 | 0.2 | %/V |
| Load Regulation | ΔV_{out} | Vin= 4.3V 1.0mA≤Iout≤100mA | -- | 10 | 30 | mV |
| Output voltage Temperature Coefficiency | $\Delta V_{out}/(T_a \cdot V_{out})$ | Iout=30mA 0°C≤Ta≤70°C | -- | ±100 | -- | Ppm/°C |
| Supply Current | Iss | -- | 5 | -- | 30 | uA |
| Input Voltage | Vin | -- | -- | -- | 6 | V |
| PSRR | PSRR | F=100Hz, Vin=4.3Vdc+1Vpp | -- | 60 | -- | dB |

Typical Application Circuit



Operational Explanation

<Output Voltage Control>

The P-channel MOSFET is connected to the VOUT pin, driven by the subsequent output signal. The output voltage at the VOUT pin is controlled and stabilized by a system of negative feedback. The IC's internal circuitry can shut-down by the CE pin's signal

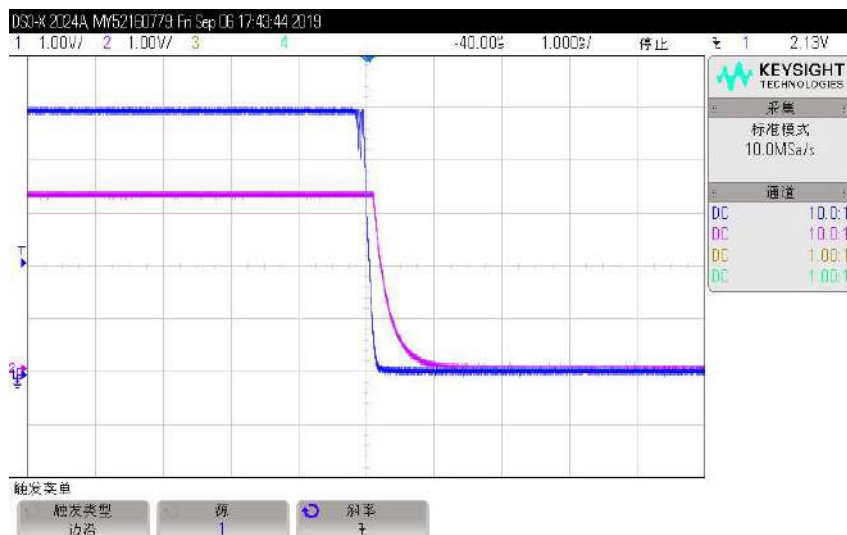
<Low ESR Capacitors>

With the ASPL8210 series, a stable output voltage is achievable even if used with low ESR capacitors as a phase compensation circuit is built-in. In order to ensure the effectiveness of the phase compensation, we suggest that an output capacitor (CL) is connected as close as possible to the output pin (VOUT) and the GND pin. Please use an output capacitor with a capacitance value of at least 10uF. Also, please connect an input capacitor (CIN) of 10uF between the VIN pin and the GND pin in order to ensure a stable power input. Stable phase compensation may not be ensured if the capacitor runs out capacitance when depending on bias and temperature. In case the capacitor depends on the bias and temperature, please make sure the capacitor can ensure the actual capacitance.

<CE Pin>

The IC's internal circuitry can be shutdown via the signal from the CE pin with the ASPL8210 series. The operational logic of the IC's CE pin is selectable (please refer to the selection guide). Although the CE pin is equal to an inverter input with CMOS hysteresis, with either the pull-up or pull-down options, the CE pin input current will increase when the IC is in operation. We suggest that you use this IC with either a VIN voltage or a VSS voltage input at the CE pin. If this IC is used with the correct specifications for the CE pin, the operational logic is fixed and the IC will operate normally. However, supply current may increase as a result of through current in the IC's internal circuitry.

ASPL8210 with fast discharge function



Notes on Use

1. Please use this IC within the stated absolute maximum ratings. The IC is liable to malfunction should the ratings be exceeded.
2. Where wiring impedance is high, operations may become unstable due to noise and/or phase lag depending on output current. Please keep the resistance low between VIN and VSS wiring in particular.
3. Please wire the input capacitor (CIN) and the output capacitor (CL) as close to the IC as possible.

Ordering and Marking Information

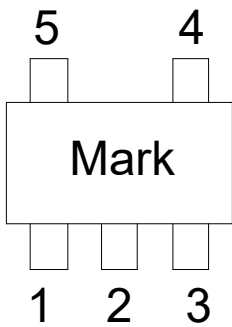
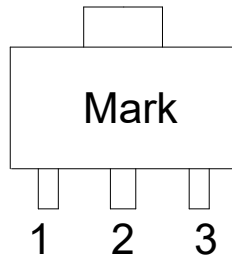
| Ordering Device No. | Package | Packing | Quantity |
|---------------------|---------|-----------|-----------|
| ASPL8210-XX-ZD-R | SOT23-5 | Tape&Reel | 3000/Reel |
| ASPL8210-XX-DI-R | SOT89 | Tape&Reel | 1000/Reel |

Note: "XX" stands for Output Voltage. "1.2": 1.2V, "1.5": 1.5V, "1.8": 1.8V, "2.5": 2.5V, "2.8": 2.8V, "3.0": 3.0V, "3.3": 3.3V.

Note: "ZD, DI" stands for package. "ZD": SOT23-5, "DI": SOT89.

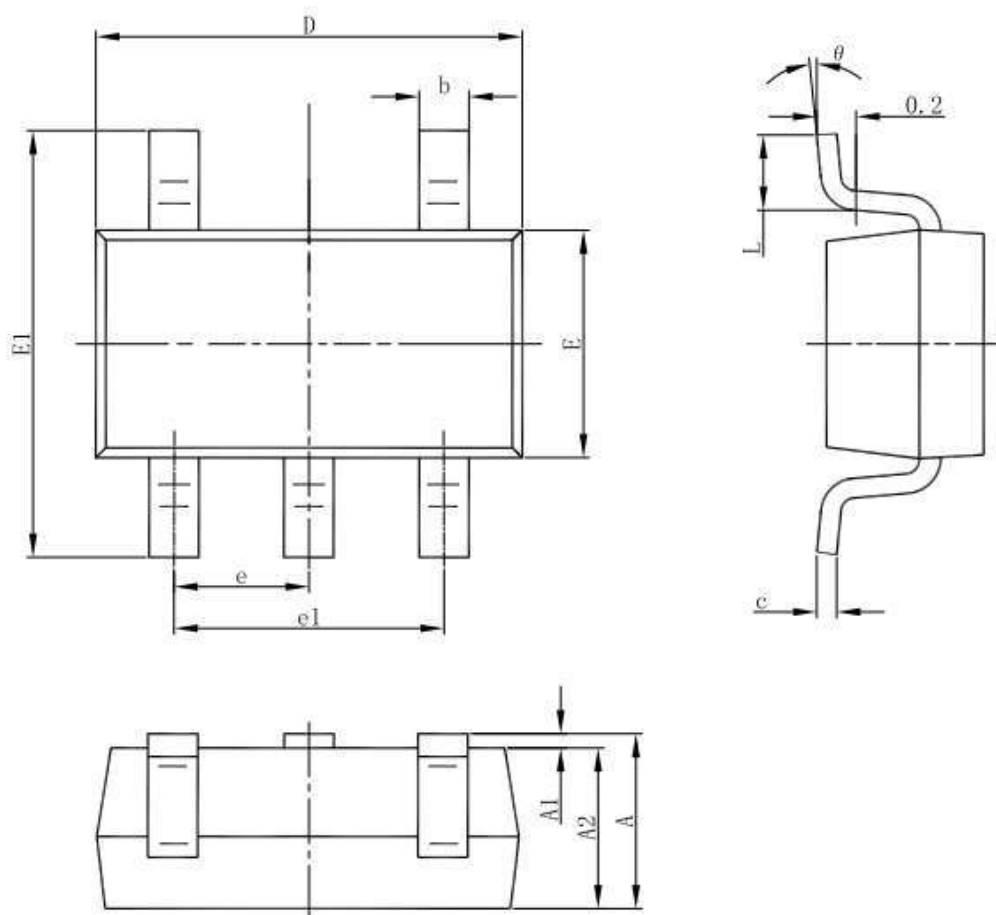
Note: "R" stands for Packing, Tape&Reel.

P/N example: ASPL8210-1.8-ZD-R, ASPL8210-2.5-ZD-R, ASPL8210-3.0-ZD-R, ASPL8210-3.3-ZD-R, etc.

| PACKAGE | MARKING |
|---------|--|
| SOT23-5 |  |
| SOT89 |  |

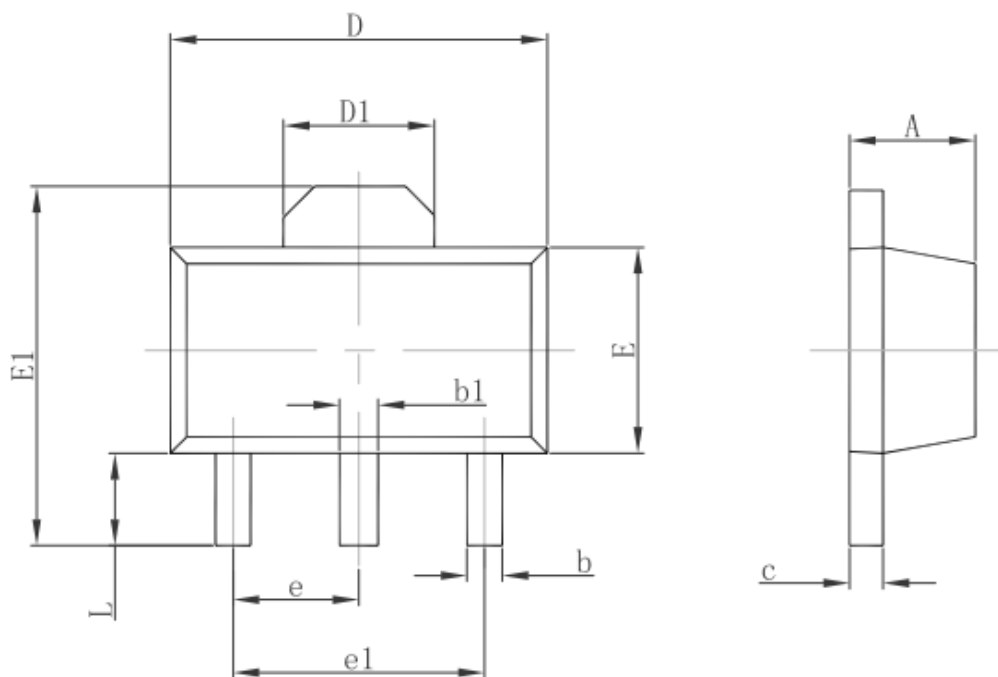
Packaging Information

SOT23-5 Outline Dimensions



| Symbol | Dimensions In Millimeters | | Dimensions In Inches | |
|----------|---------------------------|-------|----------------------|-------|
| | Min | Max | Min | Max |
| A | 1.050 | 1.250 | 0.041 | 0.049 |
| A1 | 0.000 | 0.100 | 0.000 | 0.004 |
| A2 | 1.050 | 1.150 | 0.041 | 0.045 |
| b | 0.300 | 0.500 | 0.012 | 0.020 |
| c | 0.100 | 0.200 | 0.004 | 0.008 |
| D | 2.820 | 3.020 | 0.111 | 0.119 |
| E | 1.500 | 1.700 | 0.059 | 0.067 |
| E1 | 2.650 | 2.950 | 0.104 | 0.116 |
| e | 0.950(BSC) | | 0.037(BSC) | |
| e1 | 1.800 | 2.000 | 0.071 | 0.079 |
| L | 0.300 | 0.600 | 0.012 | 0.024 |
| θ | 0° | 8° | 0° | 8° |

3-pin SOT89 Outline Dimensions



| Symbol | Dimensions In Millimeters | | Dimensions In Inches | |
|--------|---------------------------|-------|----------------------|-------|
| | Min. | Max. | Min. | Max. |
| A | 1.400 | 1.600 | 0.055 | 0.063 |
| b | 0.320 | 0.520 | 0.013 | 0.020 |
| b1 | 0.400 | 0.580 | 0.016 | 0.023 |
| c | 0.350 | 0.440 | 0.014 | 0.017 |
| D | 4.400 | 4.600 | 0.173 | 0.181 |
| D1 | 1.550 REF. | | 0.061 REF. | |
| E | 2.300 | 2.600 | 0.091 | 0.102 |
| E1 | 3.940 | 4.250 | 0.155 | 0.167 |
| e | 1.500 TYP. | | 0.060 TYP. | |
| e1 | 3.000 TYP. | | 0.118 TYP. | |
| L | 0.900 | 1.200 | 0.035 | 0.047 |

IMPORTANT NOTICE

ShenZhen Ascend Semiconductor incorporated MAKES NO WARRANTY OF ANY KIND, EXPRESS OR IMPLIED, WITH REGARDS TO THIS DOCUMENT, INCLUDING, BUT NOT LIMITED TO, THE IMPLIED WARRANTIES OF MERCHANTABILITY AND FITNESS FOR A

PARTICULAR PURPOSE (AND THEIR EQUIVALENTS UNDER THE LAWS OF ANY JURISDICTION).

ShenZhen Ascend Semiconductor Incorporated and its subsidiaries reserve the right to make modifications, enhancements, improvements, corrections or other changes without further notice to this document and any product described herein. ShenZhen Ascend Semiconductor Incorporated does not assume any liability arising out of the application or use of this document or any product described herein; neither does ShenZhen Ascend Semiconductor Incorporated convey any license under its patent or trademark rights,

nor the rights of others. Any Customer or user of this document or products described herein in such applications shall assume .

all risks of such use and will agree to hold Ascendsemi Incorporated and all the companies whose products are represented on ShenZhen Ascend Semiconductor Incorporated website, harmless against all damages.

ShenZhen Ascend Semiconductor Incorporated does not warrant or accept any liability whatsoever in respect of any products purchased through unauthorized sales channel. Should Customers purchase or use ShenZhen Ascend Semiconductor Incorporated products for any unintended or unauthorized application, Customers shall indemnify and hold ShenZhen Ascend Semiconductor Incorporated and its representatives harmless against all claims, damages, expenses, and attorney fees arising out of, directly or indirectly, any claim of personal injury or death associated with such unintended or unauthorized application.

www.ascendsemi.com